

## ADVANCED SOLUTIONS FOR EDUCATION



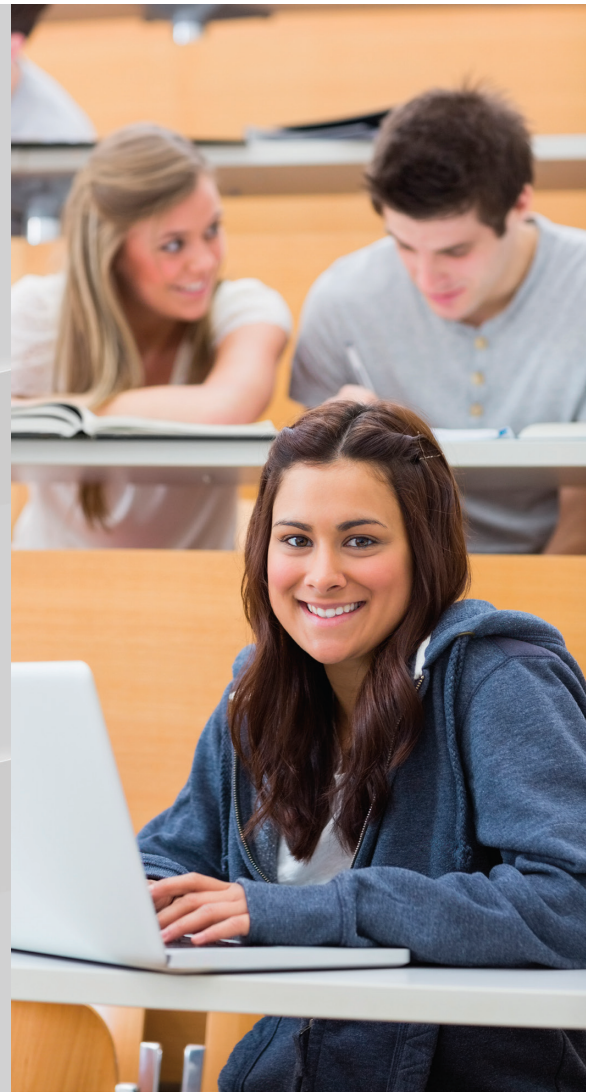
Information Governance



Workflow Intelligence



Agile Collaboration



### **Solutions that address the challenges facing today's educators.**

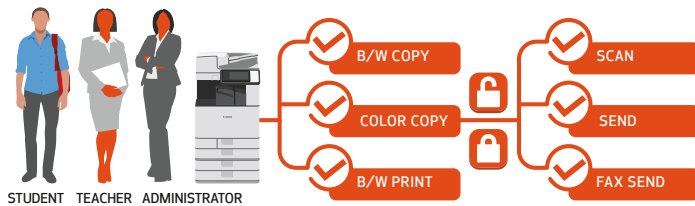
Achieving student-centric, teacher-enabled, meaningful digital transformation in education requires a set of sound strategic choices. As schools incorporate new technology in their environments, they uncover opportunities to address challenges and lay out a foundation for the campus of the future. Canon is a trusted strategic partner that can help schools create a flexible learning environment that can help foster student achievement.

# Boosting Security While Improving Accessibility

Growing concerns about unauthorized access or distribution of data require organizations to take charge of their information ecosystem and be proactive in mitigating risks of data breach. Schools are also expected to be a model for accessibility and environmental responsibility. Canon is committed to developing technologies that can help schools with these challenging demands.

## LIMITING ACCESS TO AUTHORIZED USERS

Education organizations aggregate a lot of information that needs to be kept secure—from student health and financial information to grades, from staff payroll to employee review. With Canon's Access Management System (AMS), you can restrict device features based on individual credential or pre-defined roles. The uniFLOW solution offers authentication solutions that can integrate with Active Directory to help set up the school's desired level of access for each user and enforce internal policies.\*



## TAKING STEPS TO HELP PROTECT PERSONAL DATA

Keeping personally identifiable information (PII) and other sensitive data confidential is a priority for education institutions. Canon provides driver-based, serverless, and server-based solutions, such as Canon Encrypted Secured Print, AA-PRINT, Secured Print, and uniFLOW Secure Printing. These require users to authenticate at a device before information tagged as private can be released for print and also help to route documents to the desired destination.\*



## HELPING TO SAFEGUARD SENSITIVE DEVICE DATA

Another area of potential vulnerability is device hard drives that may store confidential or restricted information. Integrated hardware solutions such as the HDD Data Erase Kit, HDD Data Encryption Kit, and HDD Erase Scheduler help support a layered security approach, starting at the device.\*



## ACHIEVING SUSTAINABILITY AND ACCESSIBILITY GOALS

Even with tight budgets, schools are expected to be environmentally responsible and implement solutions that are accessible to all people—including those with disabilities. Canon has developed innovative technologies that help minimize paper, toner, and energy consumption to reduce costs, save time, and increase productivity for a sustainable digital transition. Canon offers original and advanced energy-efficient technologies without compromising features or performance, including ENERGY STAR qualified and EPEAT registered products.

- Reduced warm-up times and heat usage
- One-watt Sleep mode
- Recycle-conscious designs
- Toner cartridge recycling
- Better Scanning with less energy
- Smaller, lighter products



To help remove technology barriers, Canon strives to create user-friendly products with functionality, operability, and convenience in mind. Features such as intuitively designed control panels, easy-to-access paper supplies, and toner replenishment areas, compatibility with screen reading software, as well as optional voice operation and guidance functions help ensure that Canon products can be used by the widest range of users.



Device shown with options.

## SECURITY AND ACCESSIBILITY FEATURES THAT CAN HELP SUPPORT REGULATORY COMPLIANCE EFFORTS

Schools must walk a fine line to provide the appropriate level of access to technology services to students, faculty, and staff, while dealing with the requirements of state and federal regulations, such as FERPA, HIPAA, COPPA, and IDEA. Canon offers solutions with access control features that can align with schools' compliance efforts.\*\*

\* Canon products offer certain security features, yet many variables can impact the security of your devices and data. Canon does not warrant that use of its features will prevent security issues.

\*\* Nothing herein should be construed as legal or regulatory advice concerning applicable laws; customers must have their own qualified counsel determine the feasibility of a solution as it relates to regulatory and statutory compliance. Some security features may impact functionality/performance; you may want to test these settings in your environment.

# Managing the Mixed-Media Learning Environments

Despite the move toward digital curricula, schools still rely heavily on print media for educational and administrative purposes. Facing continuing budget cuts, educational institutions must find ways to print more cost-efficiently, encourage responsible behavior, and maximize device capabilities to streamline workflows.

## INTEGRATING DEVICES WITH CAMPUS SYSTEMS

Schools can leverage the Canon Multifunctional Embedded Application Platform (MEAP) to easily link various imageRUNNER ADVANCE devices to many existing cost-recovery systems so they can capture and track device-related costs. Also, with integrations to leading campus card systems—such as Blackboard, Cardsmith, and CBORD—uniFLOW allows printing costs to be deducted directly from student accounts.



## EXPEDITING THE TESTING AND GRADING PROCESS

Teachers still spend much time with assessment, among a myriad of other required tasks. The Intelligent Grading Solution (IGS) provides educators with the flexibility to create and grade tests and generate detailed, analytical reports. These can come directly from compatible imageRUNNER ADVANCE systems (IGS) as well as the cloud (IGS Pro)—an embedded, easy-to-maintain, cloud-based solution allowing educators to quickly gain insight into student performance so they can provide timely feedback to students and make adjustments that can help with student achievement.



## CONTENT MANAGEMENT FOR STREAMLINED WORKFLOWS

Whether it's paper or digital, for content to have value it needs to be easily accessible by authorized persons. Canon solutions can help schools incorporate automation, synchronization, and security features for streamlined content management.

## ENCOURAGING AND PROMOTING COST-CONSCIOUS PRINTING PRACTICES

Canon's dependable solutions have helped many school districts, colleges and universities meet their goals to better manage print output and influence responsible printing behavior. uniFLOW Online Express, a device-standard\* solution, offers convenient user authentication, usage tracking functionality, device configuration, and network settings options to help limit costly operations. Having uniFLOW allows organizations to control their compatible fleet and enables an integrated, scalable, modular platform for all print, scan, and device management. uniFLOW also provides desirable analytics, including printing activity and usage comparison.



## MANAGED DOCUMENT SERVICES

For a holistic yet scalable approach, Canon MDS offers a unified output and information management solution. From the printed page to electronic documents, Canon provides a portfolio of custom solutions and services to help schools with their goals of cost reduction, improved serviceability, support, and information accessibility.



\* Can be loaded on any imageRUNNER ADVANCE with the latest firmware.

# Enabling Effective Interoperability and Collaboration

Schools have increasingly adopted cloud-based platforms to support teaching and learning. But the implementation of enterprise systems alone doesn't guarantee effective collaboration. A strategic approach to systems integration includes the ability to seamlessly connect devices and cloud platforms with multipoint access controls. A positive customer experience is crucial to a successful technology adoption, one that can lead to sustainable business processes and enable flexible and innovative learning environments.

## CONNECTING WITH CLOUD APPLICATIONS

Schools have an opportunity to lay out a strong foundation for interoperability—with a layered security approach—when they connect devices with lead cloud platforms. Canon offers multiple ways to connect the imageRUNNER ADVANCE with cloud applications so authorized users can scan to, or retrieve and print documents from, many of these platforms using the touch screen of the MFP.



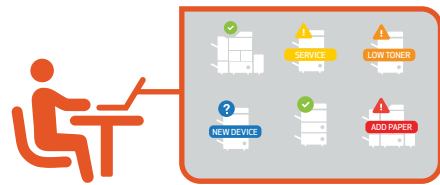
## FOSTERING A MORE PRODUCTIVE EDUCATION ENVIRONMENT

With Therefore™, a premier information management, workflow, and business analytics platform, faculty and staff can easily capture, archive, retrieve, edit, and process documents efficiently while using security features. The award-winning solution also includes a multilanguage feature and allows for cloud collaboration with popular platforms such as OneDrive® and Box®. The solution's direct integration with Canon's uniFLOW allows for the automation of many common business processes, such as HR onboarding and accounts payable, and can also be used to optimize education-specific workflows, such as those related to admissions and financial aid.



## IMPROVING THE STUDENT EXPERIENCE STARTING AT THE MFP

Mobile printing is an integral part of any modern campus. But demands for Print Anywhere must be met in a sustainable way. With peer-to-peer and cloud-based mobile print and scanning solutions—such as Canon Direct Print and Scan for Mobile, the Canon Mobile Print app, and EFI PrintMe—authorized users can send documents from their smartphones or tablets in minutes and retrieve hard-copy versions of the document from the device output tray. With the M600 Self-Serve Station, students can print from USB drives or from virtually any location using mobile devices, including cloud accounts such as Box, Microsoft OneDrive, Dropbox, GoogleDrive, or from a remote location using EFI PrintMe. Administrators can also easily add and configure devices and print services, set or adjust price rates, and integrate with campus card payment systems.



For more information about solutions for education visit [usa.canon.com/solutionsforeducation](http://usa.canon.com/solutionsforeducation)



[USA.CANON.COM/SOLUTIONSFOR EDUCATION](http://USA.CANON.COM/SOLUTIONSFOR EDUCATION)



Canon and imageRUNNER are registered trademarks of Canon Inc. in the United States and may also be registered trademarks or trademarks in other countries. imageWARE is a registered trademark of Canon U.S.A., Inc. in the United States and is a trademark of Canon Inc. in certain other countries. ENERGY STAR and the ENERGY STAR mark are registered U.S. marks. All other referenced product names and marks are trademarks of their respective owners. All printer output images are simulated. Nothing in this brochure should be construed as legal counsel or regulatory compliance advice, including without limitations with respect to statutes such as Sarbanes-Oxley, HIPAA, GLBA, Check 21, or the USA Patriot Act. Each customer must have its own qualified counsel determine the advisability of a particular solution as it relates to regulatory and statutory compliance. Neither Canon Inc. nor Canon U.S.A., Inc. represents or warrant any third-party product or feature referenced hereunder. Specifications and availability subject to change without notice. Not responsible for typographical errors. ©2019 Canon U.S.A., Inc. All rights reserved.