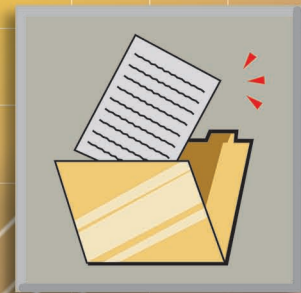


AUTHORIZED SEND

Distribute and Share Your Ideas
Effectively and Securely



AUTHORIZED SEND

▷ AN EMBEDDED DOCUMENT DISTRIBUTION APPLICATION PROVIDING ENHANCED SECURITY TO YOUR OFFICE COMMUNICATIONS

Canon imageRUNNER® multifunction devices are renowned for their ability to provide unparalleled productivity and office efficiency in document workflows. But as technology has evolved to enable the sending of digital information to e-mail and network locations at the press of a button, protecting the security of your multifunctional devices and documents has become increasingly important.

Company policies—and certain government regulations—often require that sufficient controls be in place to protect the privacy of information. Businesses are now faced with a new challenge for how to:

- Restrict scanning and sending capabilities only to authorized users
- Allow everyone to perform everyday walk-up operations
- Maintain productivity without locking down the device
- Reduce administrative burdens with a serverless solution

The Authorized Send Solution is built on Canon's MEAP® (Multifunctional Embedded Application Platform) architecture and is the ideal answer for controlling and protecting the imageRUNNER device during document distribution communication while delivering peak productivity.

▶▶▶ INTUITIVE OPERATION

Users will be surprised at just how simple it is to scan and send documents with Authorized Send. Upon choosing this application from the imageRUNNER device's touch-panel, users can enter their enterprise user name and password with the touch keyboard and choose the authentication domain if more than one exists.

Following authentication, users are presented with the available Scan-to-E-mail, Scan-to-Folder, and Scan-to-Fax (server). Once the destination type has been selected and the target document is placed on the device, users can also change per-job settings prior to sending. Such settings include paper size, resolution, brightness, color or monochrome, image mode, single- or double-sided, and file format.

▶ MULTIPLE FILE FORMATS

Documents scanned through Authorized Send can be sent as color or monochrome PDF files or black-and-white TIFF images. When the optional Universal Send PDF Advance Feature Set is installed on the Color imageRUNNER device, users can also choose to send captured pages in PDF High Compression or Searchable PDF formats.* Canon's leading PDF Technology reduces the file size of original hard-copy color documents for faster network transmission while the Searchable PDF format embeds the text in a scanned document within the file for extraction and keyword searching.

**Searchable PDF is supported by the black-and-white imageRUNNER devices when Universal Send and the Universal Send Searchable PDF Kit are installed.*

Authenticate the User



1

Select Scan Feature

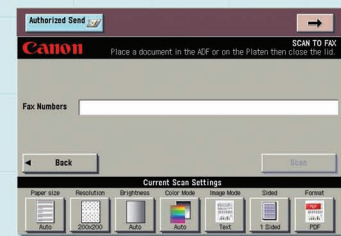


2

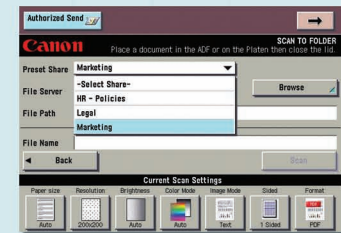
Scan-to-E-mail



Scan-to-Fax



Scan-to-Folder

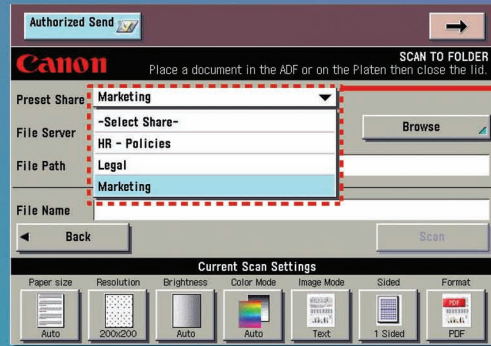


3

SHARE KNOWLEDGE THROUGH COMMON DESTINATION TYPES AND FILE FORMATS

Flexible Sending Methods

Authorized Send provides one of the most powerful ways to distribute color or black-and-white documents quickly, easily, and more securely than before. Sending documents by e-mail or fax server or to a network location is as easy as sending a message from a desktop computer. For e-mails, users can specify the “Subject” and “Body” of the message and address it by manually entering each recipient or performing a search of the Address Book. For a fax server, users just need to enter the recipient’s telephone number.



Preset Shares for Easy Distribution

To scan documents to a folder, users can simply:

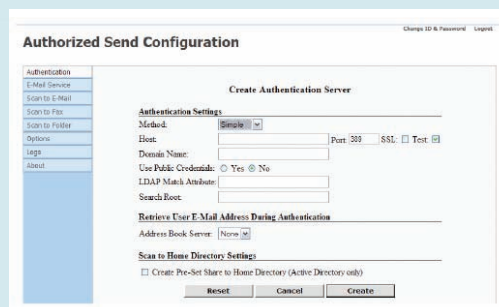
- Select their Home Directory*
- Choose a preset share to a department or workflow
- Browse a file server/folder accessible to their credentials

**Home Directory support is only available with Active Directory authentication servers.*

SIMPLE, YET POWERFUL CONFIGURATION

Authorized Send has been designed with the goal of minimal deployment time. Once installed, administration is performed through a protected Web-based configuration servlet residing on the imageRUNNER device. From the servlet, administrators can perform the following tasks:

- Configure the authentication server(s)
- Define the e-mail server and Address Book source
- Enable/disable Scan-to-E-mail
- Enable/disable Scan-to-Folder and define preset shares
- Enable/disable Scan-to-Fax
- Enable/disable log-in feature and view/delete logs
- Enable/disable forced carbon copy to sender’s e-mail address



Administrators can also control the background color of the user interface and add a logo, if desired.

SECURING YOUR DIGITAL WORKFLOWS WITH "SERVERLESS" TECHNOLOGY

As a serverless solution, Authorized Send provides secured digital document distribution, without the need for additional external applications or computer hardware. And rather than create yet another user database to maintain, Authorized Send uses common protocols to validate user accounts and query Address Books in real-time against some of the most popular authentication servers. This enterprise-level integration also provides send-to-self functionality, Home Directory support,* and authenticity from the sender to recipients since the sender's address is automatically placed in the "From" field of messages.

POPULAR AUTHENTICATION SERVERS AND PROTOCOLS

Authorized Send is an adaptable solution that integrates with, and can authenticate to, a wide variety of authentication servers and enterprise systems using common protocols. Authorized Send will even integrate with the strong, secret-key cryptography of the Kerberos protocol.

Authentication Servers

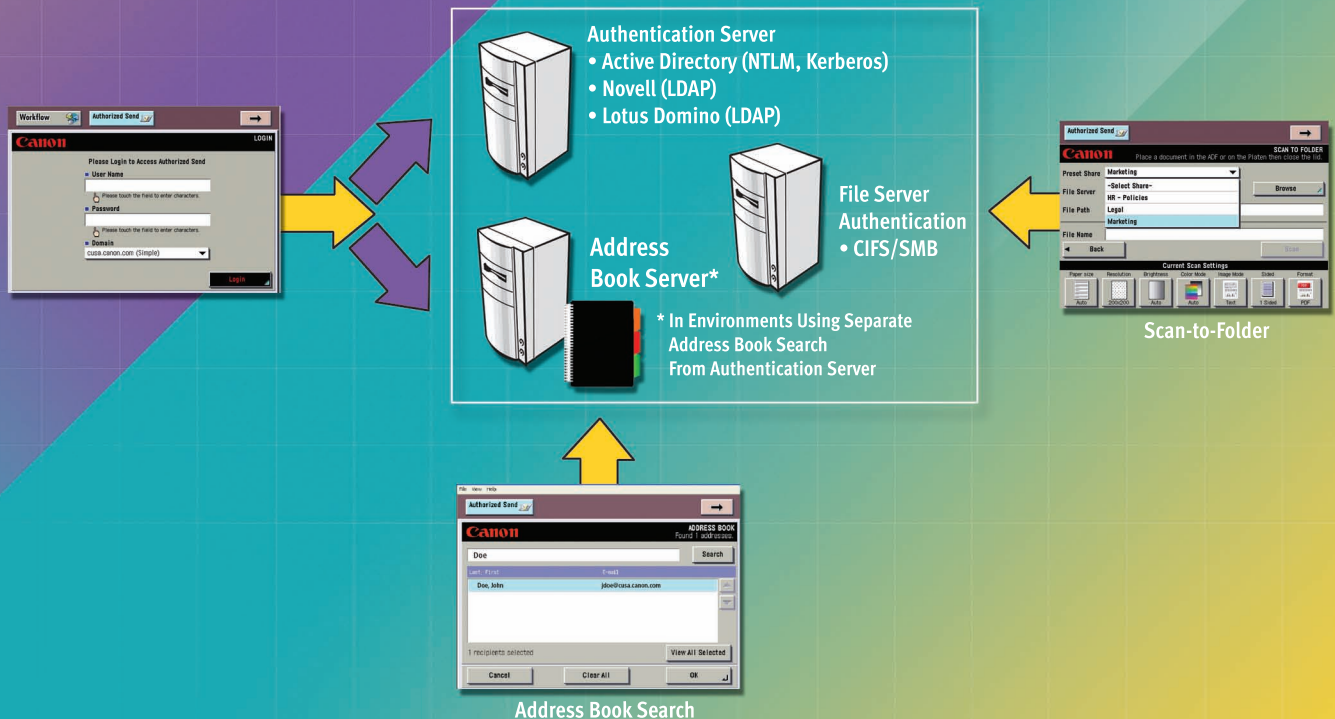
- Active Directory
- Novell® eDirectory
- Lotus® Domino

Authentication Protocols

- Kerberos (Active Directory)
- NT LAN Manager (NTLM)
- LDAP

For environments that use a server for authentication and another for the Address Book, Authorized Send also provides the ability to communicate and integrate with different servers for each.

AUTHORIZED SEND SERVER INTEGRATION



*Home Directory support is only available with Active Directory authentication servers.

MEET UNIQUE WORKFLOWS

Authorized Send is built upon Canon's MEAP architecture with a standard robust set of features and can be further customized to meet unique environments and workflows as needed. The MEAP architecture can be tailored to the needs of a particular customer or can provide additional capabilities and integration with other business applications.

Supported File Formats

- Color imageRUNNER Devices:
 - PDF
 - PDF (Compact)*
 - PDF (OCR)*
- Black-and-White imageRUNNER Devices:
 - TIFF
 - PDF
 - PDF (OCR)**

Software Requirements

- Microsoft® Internet Explorer 6.0 or later. Must be installed prior to installing Authorized Send Application.

Supported Authentication Servers

- Windows® 2000/2003 Active Directory
- Lotus® Domino Version 7
- Novell NetWare® 6.5/eDirectory 8.7 SP1

Supported Address Book Servers

- Windows 2000/2003 Active Directory
- Lotus Domino Version 7
- Novell NetWare 6.5/eDirectory 8.7 SP1

Supported Name Servers

- Windows 2000/2003 DNS Server

Supported Scan-to-E-mail Servers

- Exchange 2000/2003

Supported Scan-to-Network Share Servers

- Windows Vista®/XP/2000/2003 Local Share
- Windows Vista/XP/2000/2003 Local Domain Share
- Windows Distributed File System (DFS) Share
 - Windows Vista/XP/2000/2003

Operating Environment

- Supported Authentication/Address Book Server
 - Windows Active Directory
 - Novell NetWare 6.5/eDirectory 8.7 SP1
 - Lotus Domino v7
- Authentication Methods/Binding Methods
 - NTLM, Kerberos (with or without SSL)
 - Simple LDAP (with or without SSL)

* Requires Universal Send Advance Feature Set.

** Requires Universal Send and Universal Send Searchable PDF Kit.

Canon
*image*ANYWARE

1-800-OK-CANON
www.usa.canon.com
Canon U.S.A., Inc.
One Canon Plaza
Lake Success, NY 11042

Microsoft, Windows, and Windows Vista are registered trademarks of Microsoft Corporation in the United States and/or other countries. Lotus is a registered trademark of IBM in the United States. Novell and NetWare are registered trademarks of Novell, Inc. in the United States and other countries. CANON, MEAP, and IMAGERUNNER are registered trademarks or trademarks of Canon Inc. in the United States and may be trademarks or registered trademarks in other countries. IMAGEANYWARE is a trademark of Canon. All referenced product names and other marks are trademarks of their respective owners. Specifications and availability subject to change without notice.
©2008 Canon U.S.A., Inc. All rights reserved.

0120W712

0608-AS-10M-DNR



PRINTED ON RECYCLED
PAPER IN THE U.S.A.