

Canon



WORKGROUP SOLUTIONS



LASER CLASS® 830i/810

WORKGROUP SOLUTIONS

LASER CLASS 800 SERIES

Go Beyond Fax

Canon takes the traditional office facsimile to the next level with the new flagship LASER CLASS 830i and LASER CLASS 810 multifunction fax models. Gone are the days when small offices and workgroups must rely on multiple devices to meet their everyday document needs. Beyond their rich fax features, the LASER CLASS 830i/810 devices offer network printing,* duplex scanning and printing, and color sending capabilities** for seamless workflows and enhanced productivity.

LASER CLASS® 830i/810



LASER CLASS® 830i

- Standard 50-sheet Duplexing Automatic Document Feeder
 - Scan up to 11" x 17" paper
 - Scan up to 45 ipm (100/200 dpi, letter)
- Standard USB 2.0 and Network Printing
 - Print at up to 23 ppm (letter)
 - Up to 1200 dpi (enhanced) x 600 dpi resolution
 - Support for UFR II LT and PCL 5e/6
- Standard Color Send
- Standard 256MB RAM (up to 1,500 pages***)
- Job Forwarding and Archiving features
- Up to 500 one-touch/coded dial buttons
- Standard PC fax capabilities



LASER CLASS® 810

- Standard 50-sheet Duplexing Automatic Document Feeder
 - Scan up to legal-sized paper
 - Scan up to 37 ipm (100/200 dpi, letter)
- Optional USB 2.0 and Network Printing
 - Print at up to 23 ppm (letter)
 - Up to 1200 dpi (enhanced) x 600 dpi resolution
 - Support for UFR II LT
- Standard 64MB RAM (up to 512 pages***)
- Job Forwarding and Archiving features
- Up to 200 one-touch/coded dial buttons
- Optional PC fax capabilities

* Optional on the LASER CLASS 810 model.

** Available only on the LASER CLASS 830i model.

*** Based on ITU-T No. 1 Chart (Standard Mode).

TWO VERSATILE DEVICES, ONE MISSION... INCREASE PRODUCTIVITY

The Canon LASER CLASS 830i/810 devices help facilitate vast increases in productivity when handling documents in both hard-copy and electronic formats. Whether you need basic fax capabilities or enhanced sending, copying, printing, or job-forwarding support, the LASER CLASS 830i/810 devices provide a single solution to empower business workflows.

Copying

Conveniently make single or double-sided copies of original documents.

Faxing

Fast scanning of single- and double-sided documents for distributing information quickly.

Job Forwarding and Archiving

Automate the storage, redirection, and archiving of incoming and outgoing data to help consolidate communications.

Printing

Consolidate equipment by using the device as a network printer to produce output from a desktop at up to 23 ppm (letter).

Sending

Easily scan and send color and black-and-white documents through the LASER CLASS 830i device for increased flexibility.

Usability

Operation is intuitive for users at the device or from a PC; administration is uncomplicated, and replacing consumables is quick and easy.



** The LASER CLASS 810 model only supports Job Forwarding and TX Archiving to other fax destinations.*

FLEXIBLE COMMUNICATIONS

Expand the role of the traditional office facsimile with exciting new possibilities.

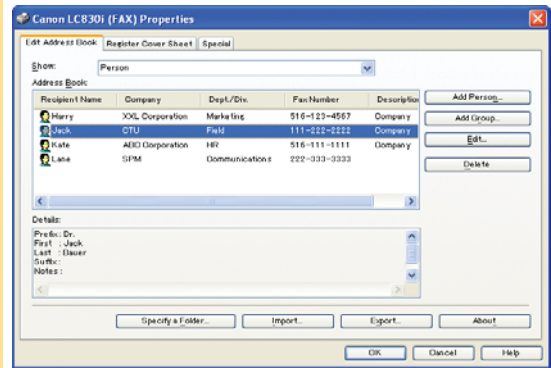
Beyond everyday faxing, the LASER CLASS 800 Series models can intelligently utilize your existing network infrastructure to enable enhanced communication and document workflows while providing ample security features to protect confidential information.

FAXING

Each Canon LASER CLASS 830i/810 model offers Super G3 high-speed fax capabilities for maximum performance and reliability. With a 50-sheet Duplexing Automatic Document Feeder and 3-second-per-page transmission rate,* documents can be sent quickly and easily – at sizes of up to 11" x 17".** Even double-sided documents can be faxed without having to first prepare a single-sided version for scanning.



Duplexing Automatic Document Feeder



Fax Driver

For desktop productivity, faxes can be sent directly from a user's PC.[^] From the fax driver, you can specify the cover sheet to be used or modify the standard template that's included. Instead of having to print a document prior to faxing, it can be transmitted directly from the desktop to help save time and the cost of consumables.

* Based on ITU-T No. 1 Chart (JBIG, Standard Mode).

** Scanning 11" x 17" paper is only supported on the LASER CLASS 830i model.

[^] Optional on the LASER CLASS 810 model.

COLOR SENDING

Change the way you communicate with the flexibility provided by the standard Color Send feature of the LASER CLASS 830i device. Single- or double-sided documents can be scanned in at up to 600 dpi for sending in TIFF, JPEG, PDF, or PDF Compact formats to e-mail, I-fax, Super G3 fax, FTP, and SMB destinations. Canon's High Compression PDF technology reduces the file size of original hard-copy color documents for faster network transmission.

JOB FORWARDING AND TX ARCHIVING

The Job Forwarding and TX Archiving features of these LASER CLASS models help to consolidate, redirect, and archive incoming and outgoing communications. The Job Forwarding feature automatically transmits incoming documents to other destinations for storing, while TX Archiving automatically transmits outgoing data to other destinations such as other fax devices, I-fax, e-mail addresses, file servers, and databases.*

These powerful features aid in eliminating the burden of manually copying or storing inbound and outbound communications for retention purposes, as well as helping to meet the requirements of specific security regulations.



Document Distribution Technology

PROTECTING YOUR CONFIDENTIAL INFORMATION

As an aid in preventing errors when sending faxes, you can specify that all fax numbers must be confirmed by users upon entry prior to transmission, prohibit users from sending faxes to multiple addresses, and disable the availability of the redial feature. You can also limit access to the Address Book with a code to prevent unauthorized users from viewing, adding, or changing stored destinations, as well as prohibit the manual entry of new fax addresses.

Canon is a leader in document security and has included a number of features within the LASER CLASS 800 Series models to help protect the privacy of your information.

* The LASER CLASS 810 model only supports Job Forwarding and TX Archiving to other fax destinations.

WORKGROUP PRINTING

Free yourself from the use of separate single-function copiers and laser printers through the combined functionality of the LASER CLASS 800 Series devices. You can print directly to the LASER CLASS 830i/810 models through the USB 2.0 interface or integrate the device within your existing network as a shared workgroup printer, extending system capabilities to multiple users.* With this technology, high-quality print resolutions of up to 1200 dpi (enhanced) x 600 dpi at up to 23 ppm (letter) can be achieved. IPv6 is also supported, providing improved traffic routing, easier management for administrators, and better application support.

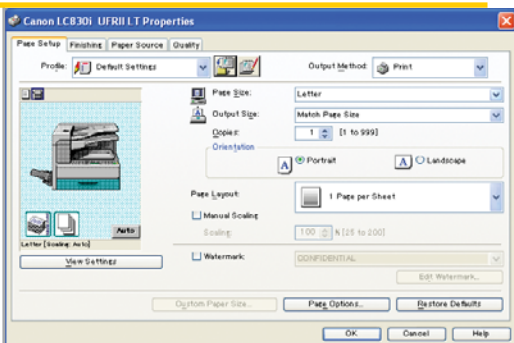
With support for Canon's proprietary Ultra Fast Rendering (UFR II LT) print technology, documents will process faster for enhanced productivity. The LASER CLASS 830i model also supports popular PCL 5e/6 page description languages. All print features can be accessed from consistent and intuitively-designed print drivers.

The LASER CLASS 800 Series models use Canon's RAPID Fusing technology, which utilizes a durable film medium and a ceramic heater to quickly fuse toner to paper. RAPID Fusing delivers virtually zero waiting time between jobs for nonstop productivity, fast warm-up times, and reduced energy consumption of 3.5 watts or less when in Standby Mode.

The LASER CLASS 800 Series devices come standard with a 500-sheet user-adjustable paper cassette that supports up to legal-sized paper and a 100-sheet multipurpose tray for handling various media types. Add an additional 500-sheet paper cassette to boost total capacity to up to 1,100 sheets.



LASER CLASS 830i Shown with Optional 500-Sheet Paper Cassette and Hand Set



UFR II LT Print Driver

* Printing requires an optional printer kit for the LASER CLASS 810 model.

USABILITY

Uncomplicated operation, easy administration

The LASER CLASS 800 Series devices have been designed with simplicity in mind, from the layout and operation of the control panel to the replacement of consumables and device management.

INTUITIVE OPERATION

The user-friendly control panel on the LASER CLASS 800 Series models makes interacting with the device simple. Particular consideration was placed on designing a familiar interface for users that would achieve simplicity in setup and operation. The control panel features a two-line backlit LCD and color LED display, as well as [Back], [View Settings], [Paper Select], and 80 one-touch buttons to simplify everyday tasks.



LASER CLASS 830i Control Panel

REMOTE UI (USER INTERFACE)

The standard Remote UI utility provides a means to manage the LASER CLASS 830i/810 models through a Web browser on the network. From the Remote UI, you can check the real-time status of printers, register one-touch and Address Book destinations, and specify various device settings.



Remote UI

ALL-IN-ONE CARTRIDGE

The LASER CLASS 800 Series devices have been designed to optimize productivity through the minimization of downtime. This is achieved through the easy access to the customer-replaceable, all-in-one cartridge.



FX11 Cartridge

USER-FRIENDLY MANUALS

The new electronic-based user documentation for these LASER CLASS 800 Series models feature powerful search tools to help you locate the answers you need on all the features and functions of the device, quickly and easily.



Electronic Manuals

* Remote UI requires an optional printer kit for the LASER CLASS 810 model.

Type:	Desktop Transceiver
Scanning Method:	Contact Image Sensor
Duplexing Automatic Document Feeder (DADF):	Up to 50 Sheets (Letter)* Up to 20 Sheets (Ledger - LC830i Only)*
DADF Document Sizes	
LASER CLASS 830i:	Maximum: 11-3/4" x 24-7/8" (297mm x 630mm) Minimum: 5-7/8" x 5-7/8" (148mm x 148mm)
LASER CLASS 810:	Maximum: 8-7/8" x 24-7/8" (216mm x 630mm) Minimum: 5-7/8" x 5-7/8" (148mm x 148mm)
Paper Supply	
Standard:	600 Sheets: 1 x 500-Sheet Adjustable Cassette; 100-Sheet MultiPurpose Tray
Maximum:	1,100 Sheets with Optional 500-Sheet Cassette (Letter)
Acceptable Paper Weight:	17 lb. - 24 lb. Bond (Cassette) 15 lb. - 34 lb. Bond (MultiPurpose Tray)
Output Tray:	100 Sheets
Recording Paper Size:	Letter/Legal
Duplex:	Std. Scan and Print
Fixing System:	RAPID Fusing System
Warm-Up Time:	19 seconds from Power On
Dimensions (H x W x D)	
Main Unit:	17-3/4" x 20-1/2" x 19" (452mm x 520mm x 481mm)
With Cassette:	22-7/8" x 20-1/2" x 19" (580mm x 520mm x 481mm)
Installation Space (W x D):	43-1/4" x 38-3/4" (1097mm x 984mm) (Including Optional Handset)
Weight	
LASER CLASS 830i:	56.2 lb. (25.5kg)
LASER CLASS 810:	54.2 lb. (24.6kg)
Toner Cartridge:	FX11 Cartridge
Cartridge Yield:	Approx. 4,500 Pages (At 5% Coverage)
Power Consumption	
Power Source:	120V-127V 50/60Hz
Max.:	1020W
Standby:	16W
Sleep:	830i: Approx. 3.5W 810: Approx. 3.0W (3.5W with Printer Kit)
Environmental Conditions	
Temperature:	59°F - 86°F (15°C - 30°C)
Humidity:	10% - 80% RH
Memory Backup:	Up to 3 Hours

FAX FEATURES

Applicable Line:	Public Switched Telephone Network**
Data Compression System:	MH, MR, MMR, JBIG
Modem Speed:	33.6 Kbps Super G3 Automatic Fallback
Transmission Speed:	Approx. 3 Sec./Page (ECM-JBIG, Transmitting from Memory)***
Fax Resolution	
Standard Mode:	200 x 100 dpi
Fine/Photo Mode:	200 x 200 dpi
Super Fine Mode:	200 x 400 dpi
Ultra Fine Mode:	400 X 400 dpi
Memory Transmission/Reception	
LASER CLASS 830i:	Approx. 1,500 Pages***
LASER CLASS 810:	Approx. 512 Pages (1,500 with Opt. Printer Kit)***
Dialing	
One-Touch Speed-Dialing:	80 Destinations
Coded Speed-Dialing:	420 Destinations (LC830i) 120 Destinations (LC810)
Group Dialing:	499 Destinations (LC830i) 199 Destinations (LC810i) Address Book Dialing Manual Dialing (Numeric Keys) Automatic Re-Dialing Manual Re-Dialing (Redial/Pause Key)
Sequential Broadcast:†	501 Destinations (LC830i) 201 Destinations (LC810)
Additional Fax Features:	Remote RX Delayed TX Dual Access TX Document Archiving Reception Restriction Memory Lock Reception Confirming Entered Fax Numbers Restricting New Addresses PC Faxing ††

COPY FEATURE

Type:	Monochrome Laser
Copy Speed:	Up to 23 Pages/Min. (Letter)
Max. Number of Copies:	99
Scan Resolution:	600 x 600 dpi
Copy Resolution:	1200 x 600 dpi (Enhanced)
Halftones:	256 Shades of Gray
First-Copy Time:	Less Than 13 Seconds
Duplex Function:	Yes (Letter-R/Legal)
Copy Features:	Electronic Sort
Copy Memory (Shared):	256MB (LC830i), 64MB (LC810)

PRINT FEATURES††

Print Speed:	Up to 23 Pages/Min. (Letter)
Supported PDL	
LASER CLASS 830i:	Std. UFR II LT and PCL 5e/6
LASER CLASS 810:	Opt. UFR II LT
Interface:	10/100Base-TX, USB Hi-Speed 2.0
Print Resolution:	1200 x 600 dpi (Enhanced)
Duplex Function:	Yes
Print Memory (Shared):	256MB (LC830i) 64MB (LC810)
Network OS:	Windows® 98/Me/2000/Server 2003/XP/Windows Vista® Macintosh® OSX (10.2.8 - 10.4.6)†††

COLOR SEND FEATURE (LASER CLASS 830i ONLY)

Sending Methods:	E-mail, I-fax, File Server
Color Mode:	Color, Black and White
Communication Protocol	
E-mail/I-fax:	SMTP, POP3, I-fax (Simple Mode)
File Server:	FTP (TCP/IP), SMB (TCP/IP)
Data Formats	
File Server/E-mail:	TIFF, PDF, JPEG, PDF (Compact)
I-fax:	TIFF (MH, MR, MMR)

OPTIONS

- FLX-Cassette Feeder 8 (500 Sheets)
- UFR II LT Printer Kit-X1 (LC810 Only)
- Handset Kit-10
- Stamp Unit-C1
- Stamp Ink Cartridge-B1
- FX11 Cartridge
- Cabinet-V1

* 21 lb. Bond

** The Public Switched Telephone Network (PSTN) currently supports 28.8 Kbps modem speed or lower, depending on telephone line conditions.

*** Based on ITU No. 1 Chart (JBIG, Standard Mode).

† Only one broadcast destination can be specified using the numeric keys.

†† Standard on LASER CLASS 830i; optional on LASER CLASS 810.

††† Only available for UFR II LT.

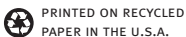
Canon
*image*ANYWARE

1-800-OK-CANON
www.usa.canon.com

Canon U.S.A., Inc.
One Canon Plaza
Lake Success, NY 11042

As an ENERGY STAR® Partner, Canon U.S.A., Inc. has determined that these products meet the ENERGY STAR guidelines for energy efficiency. ENERGY STAR and the ENERGY STAR mark are registered U.S. marks. Windows and Windows Vista are registered trademarks of Microsoft Corporation in the United States and/or other countries. Macintosh is a trademark of Apple Computer, Inc. CANON, LASER CLASS, and the SUPER G3 and GENUINE logos are registered trademarks of Canon Inc. in the United States and may also be registered trademarks or trademarks in other countries. IMAGEANYWARE is a trademark of Canon. All referenced product names and other marks are trademarks of their respective owners. Specifications and availability subject to change without notice. ©2007 Canon U.S.A., Inc. All rights reserved.

0115W343
1007-830i/810-40M-DCR



PRINTED ON RECYCLED
PAPER IN THE U.S.A.

