

QUALITY, QUANTITY, SPEED.
A NEW ERA OF LARGE-FORMAT PRINTING.





Introducing the Canon imagePROGRAF 60" PRO-6000S and 44" PRO-4000S large-format printers. With an 8-Color LUCIA PRO ink system built for advanced printing solutions, these printers are ideal for bringing production signage, commercial photography, and proofing businesses to the next level.

 **LUCIA
PRO ink**



**FINE**
Full-photolithography Inkjet
Nozzle Engineering

**L-COA
PRO**

Color consistency, fast print speeds, and low running cost are what the new PRO Series line of large-format printers were engineered for.

FEATURES

- New 1.28" print head
- New LUCIA PRO 8-color ink system
- New, high-speed L-COA PRO processor
- High-precision unibody design
- Multifunction Roll System (optional on the PRO-4000S)
- Multipositional basket
- High-capacity ink tanks
- Advanced software and workflow solutions
- Compact design
- Wi-Fi® connectivity
- Direct USB drive printing
- Sub-Ink Tank System

compact



PRODUCTION REDEFINED

Canon thought of every detail when it came to building the ultimate large-format production printer—no-touch media loading, torque control on the Take-up unit, a Sub-Ink Tank System, and a compact size reaching a whole new level of performance.

MULTIFUNCTION ROLL SYSTEM

The Canon Multifunction Roll System, standard on the PRO-6000S and optional on the PRO-4000S, can be used in two different ways—enabling a second roll of media to be loaded on the printer, or the unit can be configured as a bi-directional Take-up unit.

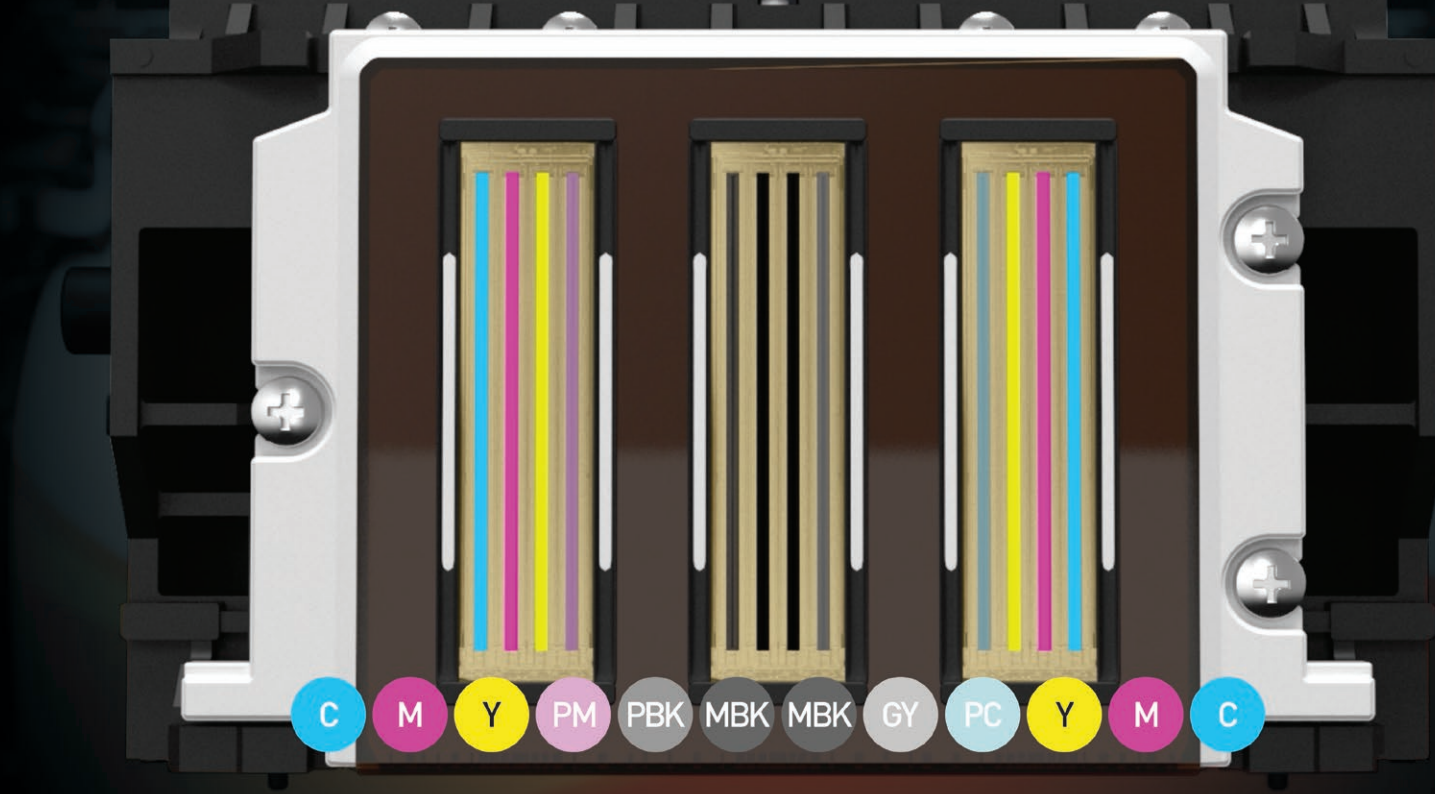
SUB-INK TANK SYSTEM

The Sub-Ink Tank System acts as an ink reservoir for the printer, working to remove all of the ink in the tank before having to replace it—helping eliminate any wasted ink and decreasing your cost per print! The empty tanks can then be replaced on the fly, without stopping the printer and ruining the print. This is extremely useful during your long print jobs.

COMPACT SIZE

These new PRO Series printers are more compact than any past imagePROGRAF model. The PRO-6000S can fit in roughly the same environment as some competitors' 44"/42" models, saving valuable office space.





Embedded innovations woven together, deliver outstanding performance each and every time.

NEWLY DEVELOPED PRINT HEAD

At the heart of the imagePROGRAF PRO-6000S and PRO-4000S printers is a single 1.28"-wide print head with 18,432 nozzles. Larger than the previous imagePROGRAF 8-color print head, the new PRO Series printers are able to produce stunning prints with less passes, making these the fastest Canon 8-color, large-format printers ever!

LUCIA PRO INK SYSTEM

The new LUCIA PRO ink set adopts newly formulated, microencapsulated 8-color pigment inks. These inks help you achieve fantastic color reproduction, image clarity, and fine lines, all ideal for creating vivid posters and advertising displays.

This new ink set helps:

- Enhance red color performance
- Reduce graininess
- Enhance dark area reproduction

To enhance print performance, the 8 colors use all 12 ink channels in the print head. The LUCIA PRO ink is arranged in a mirror layout on the print head, symmetrically arranging the colors: C, M, Y, and MBK. This layout allows for the same ejection order of the four key colors during the bi-directional printing process, resulting in faster print speeds.

ANTI-CLOGGING TECHNOLOGY

The PF-10 print head with FINE technology generates fast print speeds and helps reduce the possibility of clogging, so ink and media aren't wasted. Ink ejection conditions are precisely checked by sensors to ensure optimal performance. If a clog is detected, another nozzle will automatically provide backup, helping to reduce the possibility of a misprint.



Canon



COLOR CALIBRATION

Producing the correct color is paramount when printing high-quality work. The built-in Color Calibration function uses a multi-sensor to read color density and to calibrate the printer, so that the last print can look identical to the first.

Need color consistency in different locations? The PRO Series gives you the ability to calibrate multiple printers across the world with the single click of a button.

L-COA PRO IMAGE PROCESSOR

Big jobs need fast processing. This high-precision control engine performs the high-speed processing of massive amounts of image data, generates the printing data, and controls the optimal ink layout for achieving faster print speeds.



UNIBODY DESIGN

The newly engineered unibody structure provides a strong platform for stable print head scanning, resulting in precise ink droplet placement. The perfect combination of speed and high-quality printing is achieved with this new design.



INPUT AND OUTPUT VERSATILITY

Canon-developed hardware and software innovations offer unique flexibility in any production environment.



Wi-Fi® CONNECTIVITY

Stay Connected. A first for the imagePROGRAF large-format printers, Wi-Fi connectivity is now standard with the imagePROGRAF PRO Series.

OPERATION PANEL

The 3.5", color, LCD touch-panel makes it easy to view printer information as well as perform commands easily.

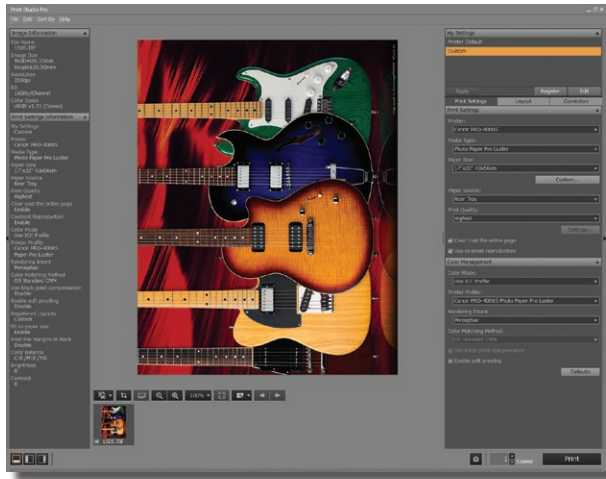
DIRECT USB DRIVE PRINTING

PDF and JPEG files can be directly printed on the imagePROGRAF PRO Series from a USB thumb drive. Simply input the thumb drive into the USB port on the printer, preview the image on the operation panel, and print! Fast and easy printing without the use of a computer.

MULTIPOSITIONAL BASKET

The PRO Series printers offer choices on how prints will be outputted based on the type and quantity being produced. Each comes standard with a multipositional basket that can be configured as any of the following:

- Catch basket
- Flatbed stacker
- Slope (used to display a print)



PRINTER MANAGEMENT SOLUTIONS

PRINT STUDIO PRO

Creating large-format prints is now easier with the introduction of Print Studio Pro for imagePROGRAF large-format printers. This software offers features that streamline your printing workflow.

Features include:

- Ability to print multiple-up images
- Large preview screen
- Import multiple images and make batch edits that apply to all
- 16-bit printing workflow

ACCOUNTING MANAGER

In today's printing environment, it's more important than ever to understand how much ink and media each print job is costing your business. Both Mac® and Microsoft® compatible, Accounting Manager serves as a powerful feature to accurately manage print costs. You can now track the amount of ink and paper being consumed for large-format printing for up to 50 printers!

QUICK UTILITY TOOLBOX

Quick Utility Toolbox is home to all the Canon PRO Series printer software and tools.

DEVICE MANAGEMENT CONSOLE

The Device Management Console software, ideal for fleet management, lets you perform color calibrations remotely. You can monitor the printer status of up to 50 units from any location in the world, be notified via e-mail when an error has occurred, or check the amount of ink left in the printers—without ever having to leave the comfort of your desk.

ADDITIONAL SOFTWARE AVAILABLE

- Print Plug-In for Microsoft® Office
- PosterArtist Lite
- Media Configuration Tool
- Direct Print & Share
- PosterArtist (optional)

imagePROGRAF PRO-6000S/4000S

TECHNICAL INFORMATION

PRINT

Printing Technology	FINE: Full-Photolithography Nozzle Engineering
Head Configuration	12-Channel Integrated Type
Nozzle Configuration	1,536 Nozzles x 12 Channels: 18,432 Total
Minimum Droplet Size	4 Picoliters per Color
Maximum Print Resolution	Up to 2400 x 1200 dpi
Ink Information	Type: Pigment-Based LUCIA PRO Ink Technology PFI-1100 (160 ml): PBK, MBK, C, M, Y, PC, PM, GY PFI-1300 (330 ml): PBK, MBK, C, M, Y, PC, PM, GY PFI-1700 (700 ml): PBK, MBK, C, M, Y, PC, PM, GY

PRINTER SPECS

Print Head	PF-10 (1)
Colors	Photo Black, Matte Black, Cyan, Magenta, Yellow, Photo Cyan, Photo Magenta, Gray
Ink Tank Shipped with Printer	8 Colors: MBK/C/M/Y (330 ml Starter Tank, Each Color) PBK/PC/PM/GY (190 ml Starter Tank, Each Color)
Hard Disk Capacity	320 GB
Printer Memory	3 GB
Printer Stand	Standard
Display	3.5" Color LCD Touch-screen
Size/Weight (with basket open)	PRO-6000S: 46.0" (H) x 78.7" (W) x 38.7" (D)/Approx. 359 lb. PRO-4000S: 46.0" (H) x 62.7" (W) x 38.7" (D)/Approx. 267 lb.

MEDIA

Media Feed	PRO-6000S: Front-Loading Roll Feed: Two* Rolls, Front Output PRO-4000S: Front-Loading Roll Feed: One Roll, Front Output Front-Loading Manual Feed: Front Loading, Front Output
Media Width	PRO-6000S: 8" - 60" (Cut-Sheet and Roll) PRO-4000S: 8" - 44" (Cut-Sheet and Roll)
Minimum Media Length	8"
Maximum Print Length**	59' (Roll Paper) 63" (Cut-Sheet)
Borderless Printing Widths	PRO-6000S: 10"/14"/17"/24"/36"/42"/44"/50"/54"/60" PRO-4000S: 10"/14"/17"/24"/36"/42"/44"
Media Thickness	.07 mm - 8 mm
Media Core Sizes	2" or 3" Core (with Supplied Adaptor)
Printable Margins	Roll Paper: Top: 3 mm; Bottom: 3 mm; Side: 3 mm Cut-Sheet: Top: 3 mm; Bottom: 20 mm; Side: 3 mm
Maximum Media Roll (Outer Dia.)	6.7" (170 mm)

GENERAL

Interfaces	Hi-Speed USB, 10/100/1000Base-T/TX, Wireless LAN (IEEE 802.11 b/g/n)***
Printer Language	Swift Graphic Raster (SGRaster)
Recommended Operating Environment*	Temperature: 59° - 86° F (15° - 30° C) Humidity: 10 - 80% (No Condensation)
Power Supply	AC 100-240 V (50-60 Hz)
Power Consumption	PRO-6000S Maximum: 113 W or Less PRO-4000S Maximum: 107 W or Less Standby: 1.8 W or Less Power Off: 0.5 W or Less
Printing Software	imagePROGRAF Printer Driver, Print Studio Pro** Print Plug-In for Microsoft Office, Direct Print & Share†, PosterArtist Lite††
Optional Software	PosterArtist
OS Compatibility	32-bit: Windows® Vista/7/8/8.1/10 64-bit: Windows® Vista/7/8/8.1/10 Mac: OS X v10.7.5 - 10.11x
Utilities	Accounting Manager, Device Management Console, Media Configuration Tool, Quick Utility Toolbox
User-Replaceable Items	Print Head (PF-10) Maintenance Cartridge (MC-30) Rotary Cutter (CT-07)
Options	PRO-6000S: Roll Holder Set (RH2-65) PRO-4000S: Multifunction Roll System (RU-41), Roll Holder Set (RH2-45)

For a complete listing of specifications, please visit usa.canon.com/largeformat.

* If Multifunction Roll is used.

** The maximum printable length varies, depending on the application, OS, and RIP used.

*** Wireless printing requires a working network with wireless 802.11b/g or 802.11n capability. Wireless performance may vary based on terrain and distance between the printer and wireless network clients.

† For the temperature and humidity conditions of papers, refer to the paper's packaging or the supplied instructions.

** Print Studio Pro plug-in software is compatible with Adobe® Photoshop CS5/CS6/CC/CC (2014)/CC (2015), Adobe Photoshop Lightroom 3/4/5/6, and Canon Digital Professional 3.12 or later.

† Direct Print & Share comes embedded with the imagePROGRAF large-format printers and is also available as a free download at <http://usa.canon.com/downloads>. You must sign up for the Google™ service separately. This service is subject to Google's terms and conditions. Based on Google's current services. Subject to change at Google's discretion.

†† Only available with the PRO-4000S.

 USA.CANON.COM/LARGEFORMAT



Canon and imagePROGRAF are registered trademarks and the GENUINE logo and LUCIA PRO are trademarks of Canon Inc. in the United States and may also be registered trademarks or trademarks in other countries. All other referenced product names and marks are trademarks of their respective owners. Specifications and availability subject to change without notice. Certain images and effects are simulated. Not responsible for typographical errors.
©2016 Canon U.S.A., Inc. All rights reserved.

0201W658
0516-6000S/4000S-10M-BJA

